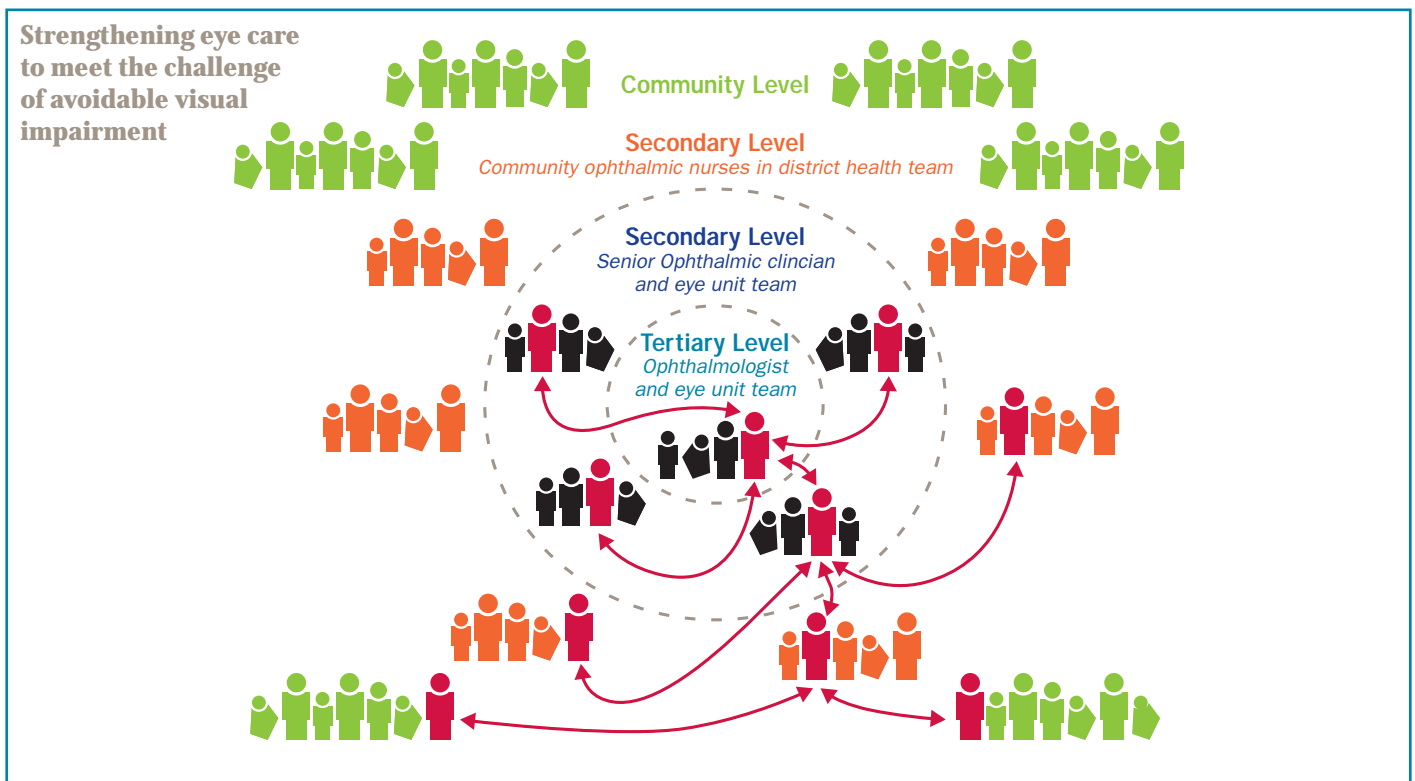


# Planning and Management for Eye Care

*A free online course from the International Centre for Eye Health,  
London School of Hygiene & Tropical Medicine*



## Who is this course for?

- Eye care workers who lead or manage the service provision of an eye unit or eye care team
- All eye care providers who work in isolated and remote settings
- Eye care providers with an interest in public health approaches
- Health providers with an interest in eye care.

## Benefits to you

This course will enable you to develop your knowledge and skills for planning and managing your eye care service. It is practical and designed for local application. It will help you to:

- Understand the major eye care needs in your population
- Assess the capacity of your eye unit to provide appropriate services
- Plan your eye care services by setting local priorities
- Select and apply strategies to manage and improve local service delivery
- Assess VISION 2020 targets and apply them to plan an effective local programme
- Align local indicators with the National Prevention of Blindness targets.

The flexibility of online learning, means that you can study at a pace and time that fits in with your work commitments and home life. Interactive content allows you to gauge your learning and apply it to your local setting.

## Course at a glance

- Course duration is 10 weeks
- Course is available on the internet and on USB (Flash) drive
- Each week will take a maximum of 4 hours of self-directed study
- Badges of completion will be awarded
- The course will be available to study between August and November 2014.

## Course format

The course consists of weekly short presentations and interactive learning exercises. Participants will be encouraged to join an online discussion group to exchange ideas about the topics covered.

## Computer requirements

To study this course you will need:

1. Access to a desktop computer, laptop computer or tablet device
2. Access to the internet, or to a computer with a USB port
3. Access to email.

If your computer was purchased after 2007 you should have no problems. We will discuss your computing needs when you apply to help ensure you can successfully complete the course.

## How to apply

Please download this interactive PDF, fill in the electronic application form below, save a copy and email it to: [eyeplan@lshtm.ac.uk](mailto:eyeplan@lshtm.ac.uk). You can also fill in a paper copy, if you prefer, and send it to: International Centre for Eye Health, London School of Hygiene & Tropical Medicine, Keppel Street, London, WC1E 7HT, United Kingdom.

## About the International Centre for Eye Health and the International Agency for the Prevention of Blindness

The International Centre for Eye Health (ICEH) is based at the London School of Hygiene & Tropical Medicine where it is led by Professors Clare Gilbert and Allen Foster. The main aim of ICEH is to facilitate a reduction in blindness with a particular emphasis on low-income countries.

The International Agency for the Prevention of Blindness was established in 1975 as a coordinating organisation to lead international efforts in blindness prevention. Its first major achievement was the establishment of the WHO programme for prevention of blindness, with which it has remained strongly linked, and which is now embodied in the global initiative, VISION 2020: The Right to Sight.

# Application Form

## Introduction to Planning and Management for Eye Care

Surname or Family Name: .....

First Name(s): .....

Title: (Dr/Mr/Mrs etc): .....

Email Address: .....

Job Title: .....

Institution: .....

Country: .....

*If you have a physical or other disability which might need special arrangements please inform us when you apply.*